

## HEIGHT CARDS FOR DOGS ENTERED IN OBEDIENCE OR RALLY OBEDIENCE TRIALS

Before a dog may be entered in an Open Obedience or Advanced Rally Trial it must have been measured and issued with a Height Card in accordance with the Rules of the South Australian Canine Association.

Normally a dog should be at least 18 months of age before it is measured. If a dog is measured before this time it must be re-measured once it has attained 18 months of age.

If the dog has been measured for competition in Agility, the Agility Height Card may be used for the purposes of Obedience Trials. The owner has the choice as to whether they wish to have their dog measured separately for Obedience.

To arrange for your dog to be measured you should contact Brian Fielder by email at [brifield@bigpond.net.au](mailto:brifield@bigpond.net.au) or by telephone on 0403 317 763.

Wherever possible, measuring will also take place at all country trials, but the club should advise the number of dogs required to be measured.

Prior to having your dog measured you will need to complete the Registration Form below and bring it with you to the measuring. If your dog has been desexed please also bring documentary proof of its desexing

.....

### Dogs SA

#### Obedience Height Card Registration Form

Dog's Name.....

Breed.....

Reg No ..... Sex .....Desexed .....

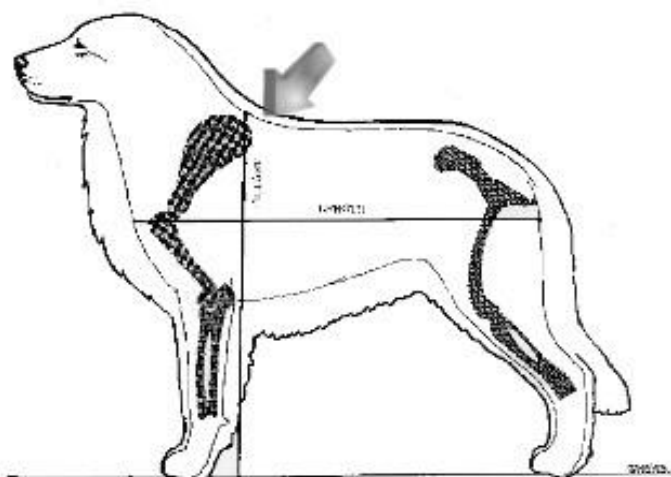
D.O.B ..... Dog Height .....mm

Owner .....Date .....

Judge 1 ..... Judge 2.....

## MEASURING OF DOGS FOR OBEDIENCE TRIALS

- 1 Measurements are to be taken by 2 Judges licenced to judge Open Obedience or Advanced Rally trials.
- 2 The measurement must be taken using an approved measuring device.
- 3 If the dog has not attained the age of 18 months at the time of measuring it may be required to be re-measured after it has reached 18 months of age.
- 4 The measurement shall take place on a level surface sufficiently firm to give an accurate reading of the dog's height at the withers.
5. The height at the withers shall be taken by measuring as perpendicular as possible from the ground adjacent to the rear of the dog's front feet. The adjustable bar of the device should rest firmly on the dog's withers without undue pressure while the base bar of the measuring device should be flat on the ground immediately behind the dog's front feet with the calibrated bar as perpendicular to the ground as possible (see illustration below).
- 6 The dog should stand normally, with its front legs perpendicular to the ground and its rear legs in their normal standing position. The dog's muzzle should be as parallel to the ground as possible.
- 7 The handler may stand either beside or in front of the dog whichever is necessary to enable an accurate measurement to be made. The handler may touch the dog, but only as deemed necessary by the measuring Judge to ensure that an accurate measurement can be made.
- 8 A maximum of three measurements should normally be taken to provide an average measurement. Measurements should be recorded to the nearest 10 millimetres.



(copyright GPCA Illustrated Standard)

The vertical line below the arrow illustrates the line dropped from the point of shoulder to the floor that gives the true height of the dog.